

A large, low-angle photograph of a glass pyramid structure, likely the Great Pyramid of Giza, set against a clear blue sky with a few wispy clouds. The pyramid's grid of glass panes is prominent, and the perspective is from the base looking up.

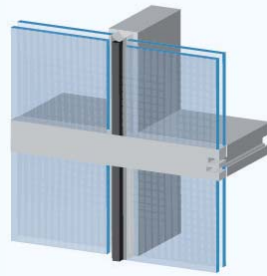
PECORA ARCHITECTURAL GLAZING SYSTEMS



**SERVICE.
PERFORMANCE.
RESULTS.**

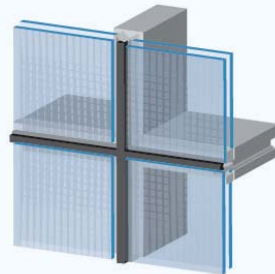
Unmatched High Performance Sealant Solutions

Pecora offers a complete line of high performance products suitable for shop or field applications in demanding structural and non-structural glazing. With building and energy efficiency codes becoming even more stringent, Pecora's glazing solutions include products with high green strength, long lasting bonds to a variety of substrates, and Pecora's industry leading non-staining technology.



2-SIDED GLAZING

Two-sided structural silicone glazing provides mechanical support for the window system. Either the horizontal or vertical joints are structurally adhered to the supporting structure. The dead load of the glass weight is supported mechanically.



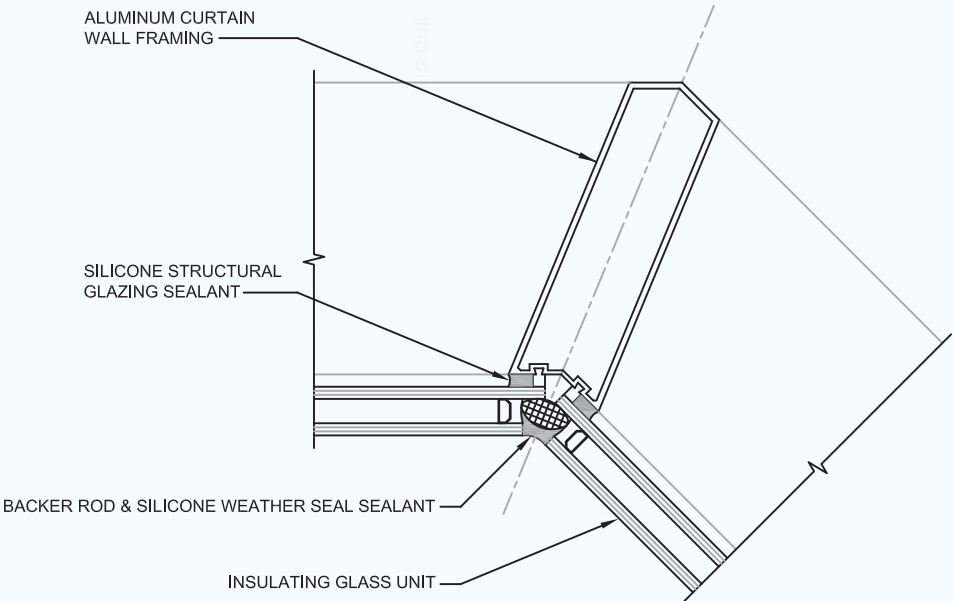
4-SIDED GLAZING

Four-sided structural silicone glazing provides structurally adhered support for the window on both the horizontal and vertical joints — allowing for unique and uninterrupted glass designs.

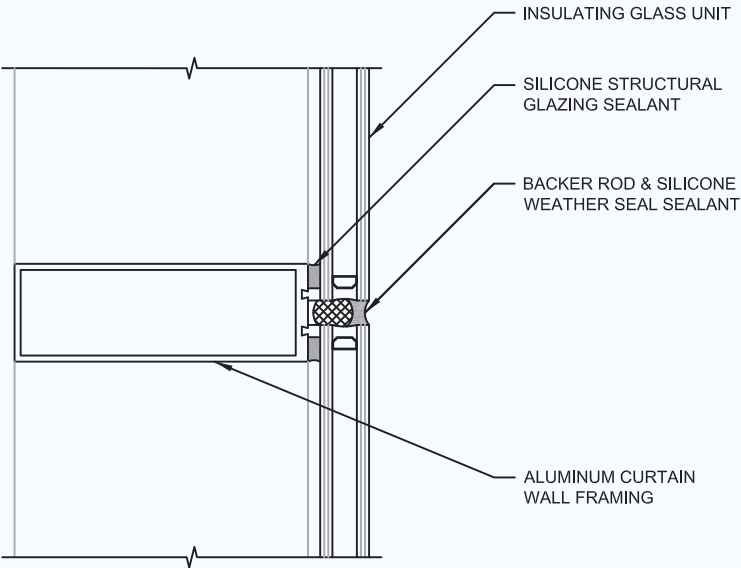
S Structural Glazing

Over the past decades, there has been a larger emphasis and focus placed on structural glazing — allowing for sleeker and more modern building designs. Glazing can contribute to timelier construction practices, a reduction in the overall weight of a structure, and thermal efficiency of buildings by reducing or eliminating the exposure of metal framing. Choosing properly designed joints with the correct sealant remains important to optimum performance since the exterior of a building remains subjected to harsh environmental conditions and UV rays. Properly installing the correct sealant forms a continuous waterproof seal against water and air infiltration while providing structural support of the glazing unit.

SSG 135°



SSG JAMB





Structural Glazing Appraisal Program

Structural Glazing places a significant responsibility on all parties in the construction and architectural community. Pecora offers a complimentary Structural Glazing Appraisal Program designed to reduce the risks to all team members involved in the design, construction, and installation of structural glazing silicone sealants.

Our Technical Service Department advises on the correct sealant for the job and will work with the glazier to recommend proper surface preparation and installation procedures.

THE PROGRAM CONSISTS OF:

- Project Review
- Shop Drawing Review
- Adhesion Testing
- Stain Testing
- Compatibility Testing

FOR MORE INFORMATION:

**Call Technical Services
at 800-523-6688**

Unitized Glazing

In-shop fabrication of curtainwall systems requires special types of sealants with unique curing mechanisms that promote increased manufacturing efficiencies and sealant performance. These products provide primerless adhesion to most substrates and finishes. Applications of the sealant may vary from back bedding compounds, cap beads, interior joinery, end dams, and screwheads. The use of unitized glazing can help with construction efficiency — allowing for in-shop assembly of building components while minimizing delays due to weather conditions.





Pecora's Non-Staining (NST) Technology

Pecora's unique NST technology allows for silicone sealant technology that exceeds industry offerings in fluid-free architectural sealants which eliminates the potential for porous substrate staining, metal panel and glass surface residue rundown, and reduced dirt pick-up.

Pecora 895NST

A high performing, medium modulus structural glazing silicone specifically designed for curtain wall systems as well as a variety of non-structural and weatherseal applications.

This product comes in a wide range of colors.

Pecora 890NST

An ultra-low modulus silicone designed for sealing expansion and control joints in precast panels and metal curtain walls as well as perimeter sealing of doors and windows. It performs exceptionally well under dynamic conditions.

896 SERIES

Pecora 896FC

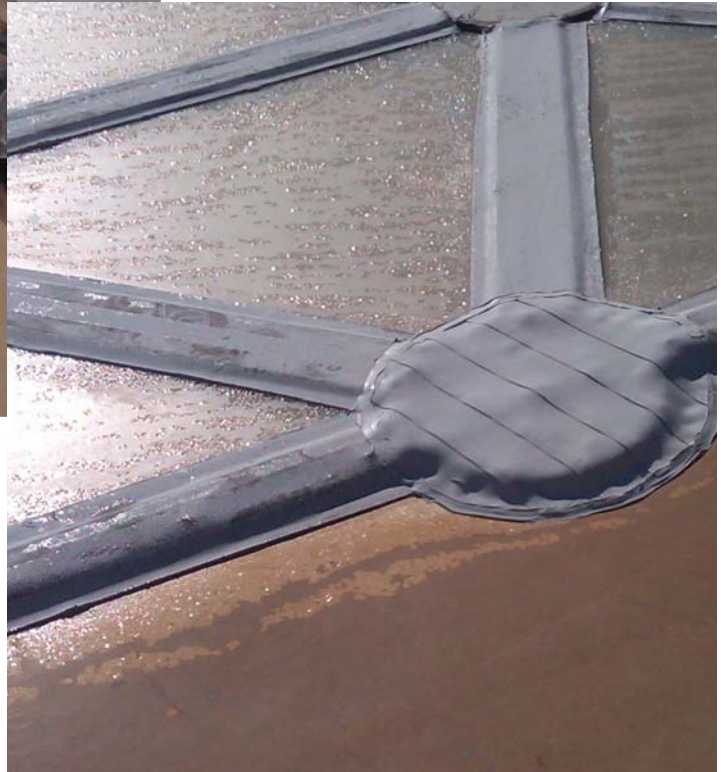
Eliminates the fluid found in traditional silicone sealants. Its fast-cure formula allows for a quick, sure adhesion while providing the fastest possible green strength available in a one-part silicone.

Pecora 896HIS

A high impact silicone sealant designed for blast resistant, structural, and protective glazing with very high tear and tensile strength as well as excellent adhesion to a variety of substrates.

Pecora 985

High modulus, two-component, fast-curing structural sealant specially formulated for shop fabrication of unitized curtain walls and structural glazed details.

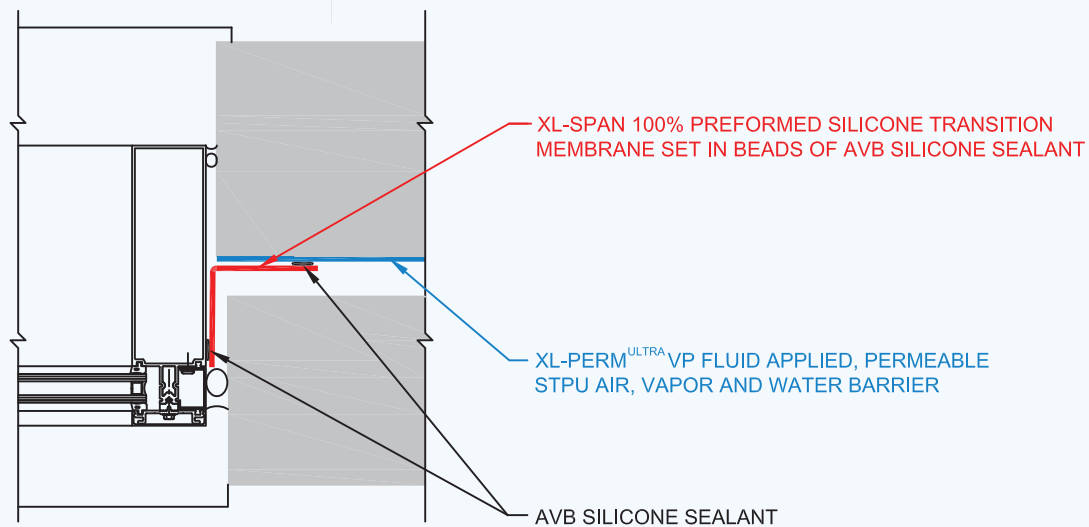


R

Restoration Made Easy

Sealant failures in glazing systems remain a common occurrence during a building's lifespan and can result in substantial damage to the property. Pecora Sil-Span Preformed Silicone Profiles provides an alternative to the traditional method of repairing failed glazing sealants. Instead of the laborious job of removing the old material and possibly causing substrate damage, Pecora's Sil-Span bridges over failing glazing details and waterproofs the building envelope while maintaining building integrity.

PECORA XL-TRANSITION SYSTEM



Transition Systems

Continuity is key when considering building envelope performance and durability. Window assemblies or curtain walls must interconnect with continuity to adjoining building façade components to prevent air and water penetration.

As building codes and regulations become more stringent, most buildings leverage some type of air barrier system to aid in creating energy efficient building envelopes. The creation of a continuous monolithic skin remains a key factor to the success of any air barrier system which typically includes challenges in connecting dissimilar components and materials. Pecora offers the **XL-Transition System** — a simplified approach to assured continuity of the window system or curtain wall to the air, vapor, and water barrier systems — which utilizes Pecora's XL-Span 100% Silicone Extruded Transition Membrane and AVB Silicone Sealant.

XL-Span comes in 50 foot translucent ribbed extruded membrane rolls and four, six, or nine inch wide sections. Apply Pecora AVB, a single component 100% silicone sealant, as the adhesive for the XL-Span to ensure an airtight transition. The XL-Transition System allows for a continual air and water tight transition seal between dissimilar materials, curtain wall, and window systems.

We are your single supplier for Architectural Glazing Sealants:

PECORA PRODUCT	DESCRIPTION	PROPERTIES / SPECIFICATIONS			
		Composition	Movement Class	Service Temp (F)	Modulus (Tensile At 100% Extension (Psi))
896FC	Fast Curing, Fluid-Free Window and Door Sealant (NS) (I)	Silicone	25	-60 to 300	45
896-HIS	High Impact Silicone (NS) (I)	Silicone	25	-60 to 300	120
985	Fast Curing, Structural Silicone Sealant (NS) (II)	Silicone	25	-60 to 300	75
860	Economical, Acetoxy Glazers and Contractors Sealant (NS) (I)	Silicone	25	-75 to 400	60
PCS	Contractor Silicone (NS) (I)	Silicone	50	-60 to 300	35
Sil-Span	Pre-Formed Silicone Profile Seal (P)	Silicone	200	-60 to 300	70
890NST	Non-Staining Technology™ Ultra Low Modulus Silicone Sealant (NS) (I)	Silicone	100	-60 to 300	25
895NST	Non-Staining Technology™ Silicone Glazing & Weatherproofing Sealant (NS) (I)	Silicone	50	-60 to 300	45
AVB	Air Barrier Surface Transition Silicone Sealant (NS) (I)	Silicone	25	-60 to 300	33
XL-Span	Pre-Formed Silicone Transition Membrane (P)	Silicone	200	-60 to 300	180
BA-98	Non-Skinning Butyl Sealant	Butyl			

PECORA PRODUCT	APPLICABLE SPECIFICATIONS											APPLICABLE STANDARDS		
	Expansion & Control	Waterproofing	Non-Structural Glazing	Structural Glazing	Shop Glazing	Window Bedding	High Impact	Food Processing	Perimeter	Sanitary Sealing	Security	Acoustical		
896FC		●	●		●	●	●		●					TT-S-001543A, TT-S-00230C, ASTM C-920
896-HIS			●	●	●	●	●				●			AAMA 506.0, TT-S230C, Class A, ASTM C920, ASTM C1184
985			●	●	●	●	●	●						ASTM C920, USDA
860	●		●			●		● _{FDA}	●	●				ASTM C920, TT-S-001543A, FDA, NSF51
PCS	●		●		●	●	●	●	●					ASTM C920, TT-S-00230C, CGSB-19GP-9, USDA
Sil-Span	●		●					●	●					ASTM C1523, USDA
890NST	●		●					●	●					ASTM C920, TT-S-001543A, 19-GP9, USDA
895NST	●		●	●	●	●	●	●	●					ASTM C920, TT-S-001543A, 19-GP9, USDA
AVB		●						●	●					ASTM C920, USDA, UL
XL-Span		●						●	●					ASTM C-1523, USDA
BA-98												●		ASTM C-919, ASTM E-90, AAMA 809.2



The Pecora promise is about more than high quality sealants, air barriers, and traffic coatings. It's a promise to you, to your project, to your reputation. We're hands-on and always here when you need us. Ready to make recommendations, answer questions, work through decisions, and help you find the best solution for your job.

It's a promise of partnership.

Since its founding in 1862 as a Philadelphia-based paint and varnish company, Pecora has developed and manufactured trusted solutions to meet every customer's needs. Over the years, the company used its innovative technological development capabilities to grow its product line and quickly emerged as a premier manufacturer of architectural weatherproofing products. Pecora is ISO 9001:2008 certified and proudly manufactures all products right here in the USA.

PECORA PROTECTS.