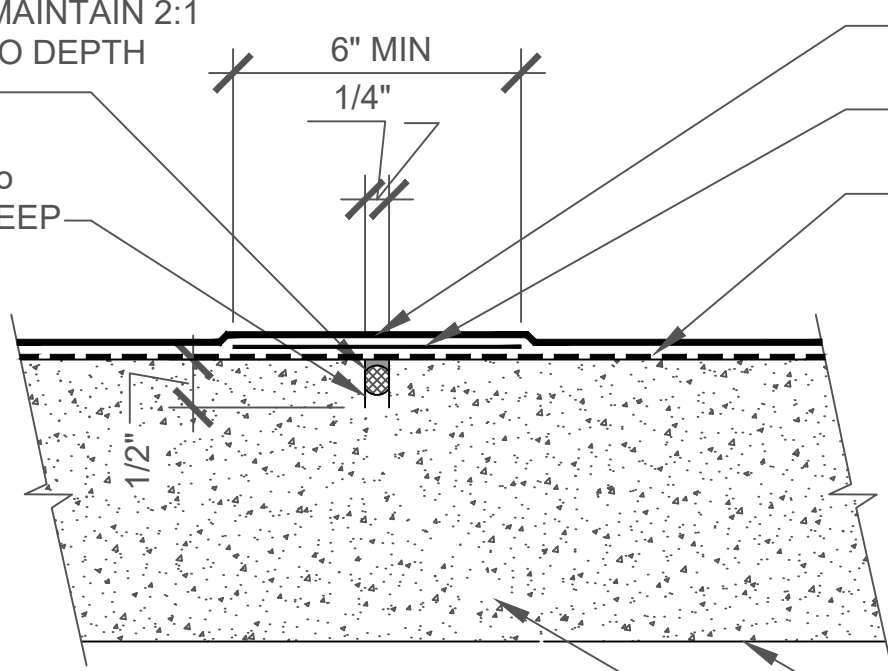


CLOSED CELL BACKER ROD &
 PECORA DECK-SEAL or DYNATRED
 TRAFFIC-GRADE POLYURETHANE
 JOINT SEALANT - MAINTAIN 2:1
 SEALANT WIDTH TO DEPTH
 RATIO

SAW CUT CRACK to
 1/4" WIDE by 1/2" DEEP



PECORA-DECK HB1100-SA TOP COAT

DETAIL COAT of PECORA-DECK HB1100-SA

PECORA P-801-VOC POLYURETHANE PRIMER
 or P-808 EPOXY PRIMER (PRIMER OPTIONAL
 for PEDESTRIAN-GRADE COATING ONLY)

CAST-IN-PLACE or PRECAST CONCRETE
 FLOOR, DECK, or SLAB

MOVING (DYNAMIC) CRACK 1/16" WIDE or LESS

NOTE:
 SEE HB1100-SA APPLICATION & TRAINING MANUAL for COATING
 SYSTEM THICKNESSES & FULL INSTALLATION INSTRUCTIONS.

TREATMENT OF DYNAMIC CRACKS >1/16" IN WIDTH



Pecora Corporation is a manufacturer of materials and not a licensed design professional. Details prepared by Pecora are schematic only and are offered as a guide for the convenience of Pecora's customers.

07 18 00 - TRAFFIC COATINGS / B3040 - TRAFFIC BEARING COATINGS
 PECORA-DECK HB1100-SA ONE-STEP TRAFFIC COATING
 TREATMEENT of DYNAMIC CRACKS less than 1/16" in WIDTH

NO SCALE	REV: 02/2024	DWG NO: PEC-HB1100SA-103
----------	--------------	--------------------------